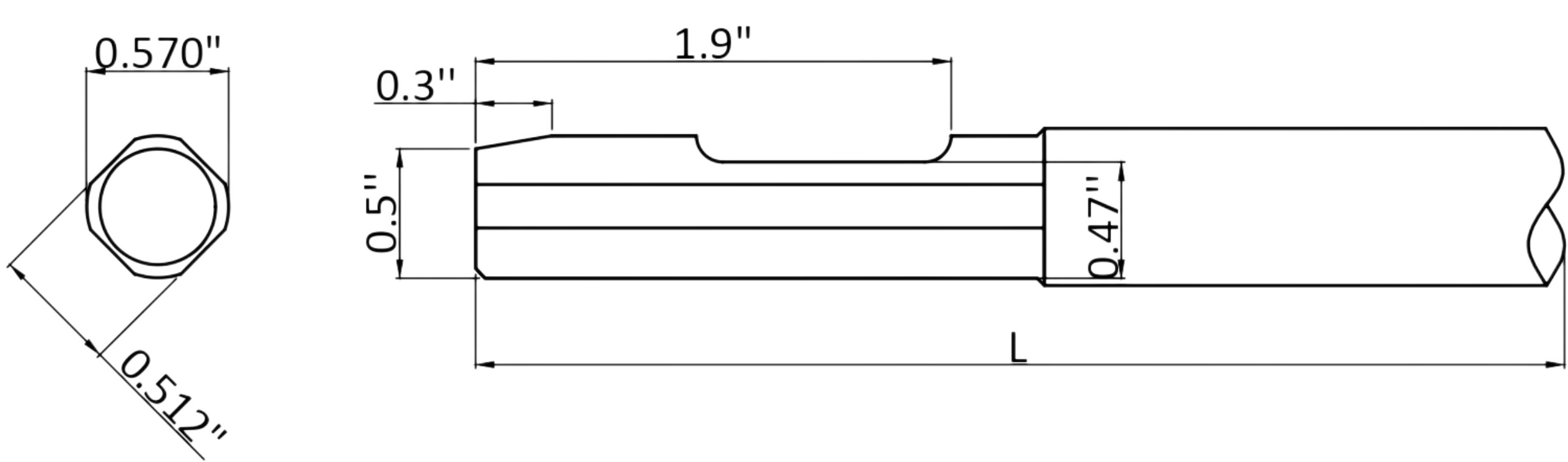


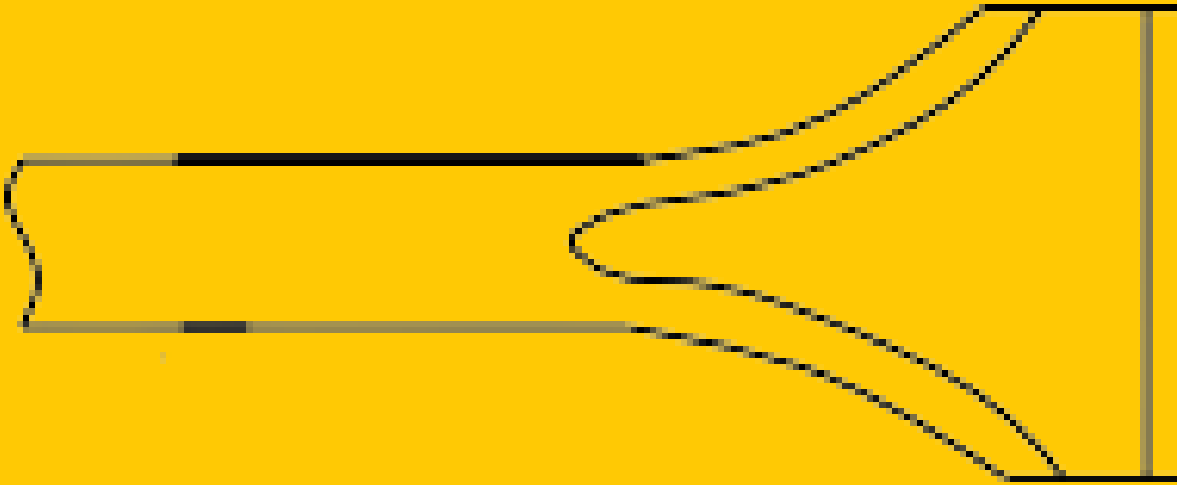
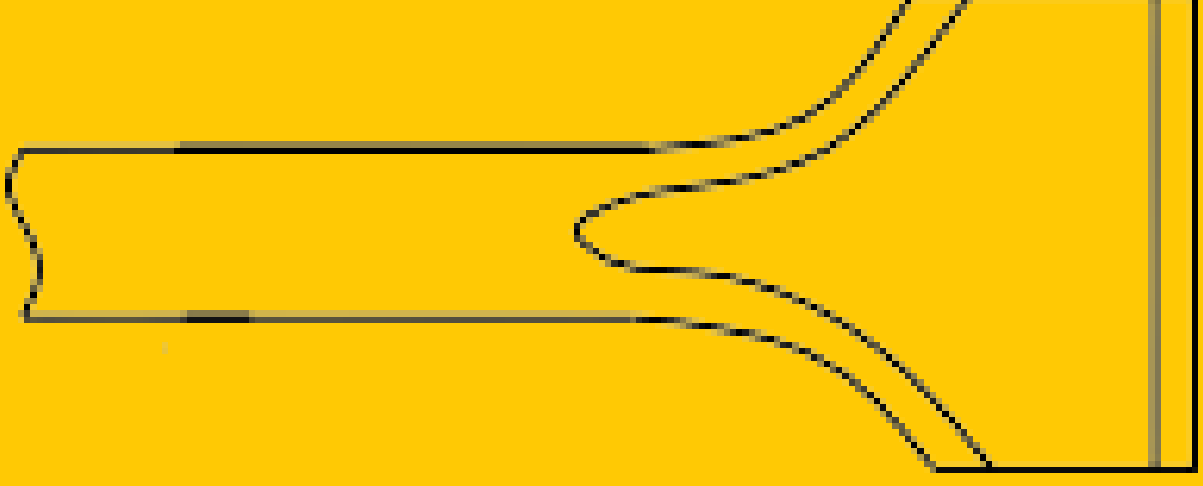



Ace Pneumatics Manufactures Weld flux chipper chisels suitable for the 455L Weld flux Chipper. Our high-quality Weld flux chipper chisel are designed to provide maximum efficiency and reliability in construction and plant maintenance work, and we offer customization options to meet specific customer requirements. As well as we offer comprehensive range of Contractor Tools, Pavement Breaker Steel, Pneumatic Chisel, Chipping Hammer Steel, Jumbo Rivet Buster Steel, Rivet Boyer Snap, Rivet Sets, Chisel Handheld tools (Working Tools), Chipping Hammer Spare Parts, Paving Breaker Spares, Rivet Buster, and more.

WELD FLUX CHIPPER CHISEL



Point Type	Part No	LENGTH		WEIGHT	
		mm	Inch	Kg	Lb
Blank 	455-W-BL-7	178	7"	0.2	0.5
	455-W-BL-9	229	9"	0.3	0.65
	455-W-BL-12	305	12"	0.4	0.87
	455-W-BL-18	458	18"	0.6	1.3
Flat Chisel 	455-W-CP-7	178	7"	0.2	0.5
	455-W-CP-9	229	9"	0.3	0.65
	455-W-CP-12	305	12"	0.4	0.87
	455-W-CP-18	458	18"	0.6	1.3
Scaling Chisel 	455-W-SC-7	178	7"	0.2	0.5
	455-W-SC-9	229	9"	0.3	0.65
	455-W-SC-12	305	12"	0.4	0.87
	455-W-SC-18	458	18"	0.6	1.3
Wide Scaling Chisel 	455-W-WS-7	178	7"	0.2	0.5
	455-W-WS-9	229	9"	0.3	0.65
	455-W-WS-12	305	12"	0.4	0.87
	455-W-WS-18	458	18"	0.6	1.3
Angle Chisel 	455-W-AG-7	178	7"	0.3	0.63
	455-W-AG-9	229	9"	0.36	0.75
	455-W-AG-12	305	12"	0.46	0.97
	455-W-AG-18	458	18"	0.65	1.37



Suitable :-

CP-455 L ,Ace WF455L Weld Flux Chipper